



Changes / new features WinREG 4.1

from
WinREG V 3.9.7 of 04.04.2016
to
WinREG V 4.1.2 of 15.08.2017

Product name / type: WinREG parameterization software

Date of creation:

04.09.2017

Creator:

Peter Held

History:

04.09.2017 Creation for 4.1.2

Operating systems, system requirements:

Windows XP, Vista, Windows 7, Windows 8, Windows 10
Windows Server 2003 or newer

Microsoft DotNet Framework Version ≥ 3.5

Compatibility firmware

The WinREG parametrization software is in general compatible with all firmware versions. That means you may use the latest WinREG version also for old firmware versions. The WinREG 4.1.2 is optimized for REG-D(A) and PAN-D firmware version 2.27/3.27 and REG-DP(A) firmware version 2.6.03.

The WinREG 4.1.2 is equipped with a version matrix. That enables the WinREG software to determine whether a parameter is available in a certain firmware version or not. This function is available for REG-D(A) and PAN-D at the moment. With this feature reading or sending features that have not been implemented yet in older firmware versions is suppressed. However, the parameters will be correctly indicated in REGPara.

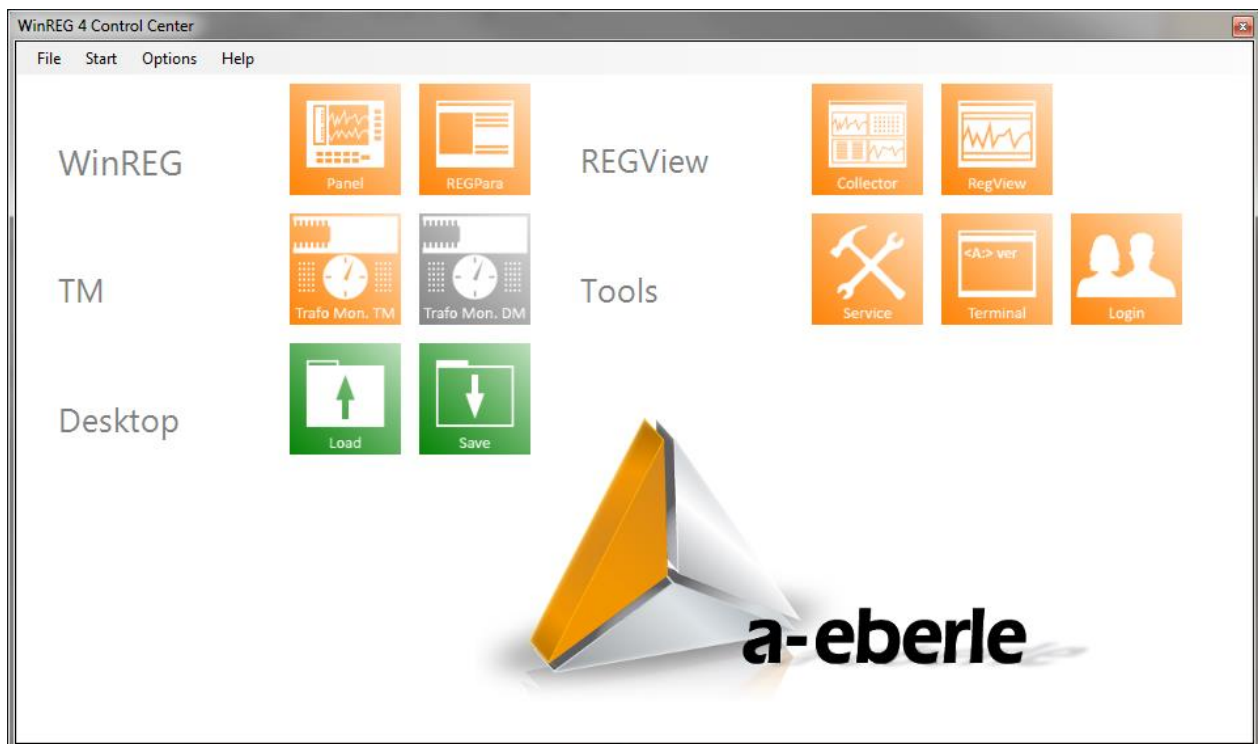
New features

General:

+ New WinREG4 Control Center

The new Control Center appears in a new and individual configurable look. Now it is possible to arrange the program buttons in groups and in an individual order. In the menu "Option/View" background, design and size of program buttons can be changed. There is also a new menu tab "Start" available, which runs the sub programs of WinREG.

The menu "File/Terminate: Server" will close the communication server of WinREG (HRServer.exe).



+ Stability Improvement

Read out of data with the REGPara and Service program becomes more stable. Also the Panel with serial and ELAN connection between selected and connected device.

+ Display up to 8 parallel connections.

Based on the stability improvement it is now possible to display and use up to 8 different devices and ports (serial, TCP/IP or COM Server) simultaneous.

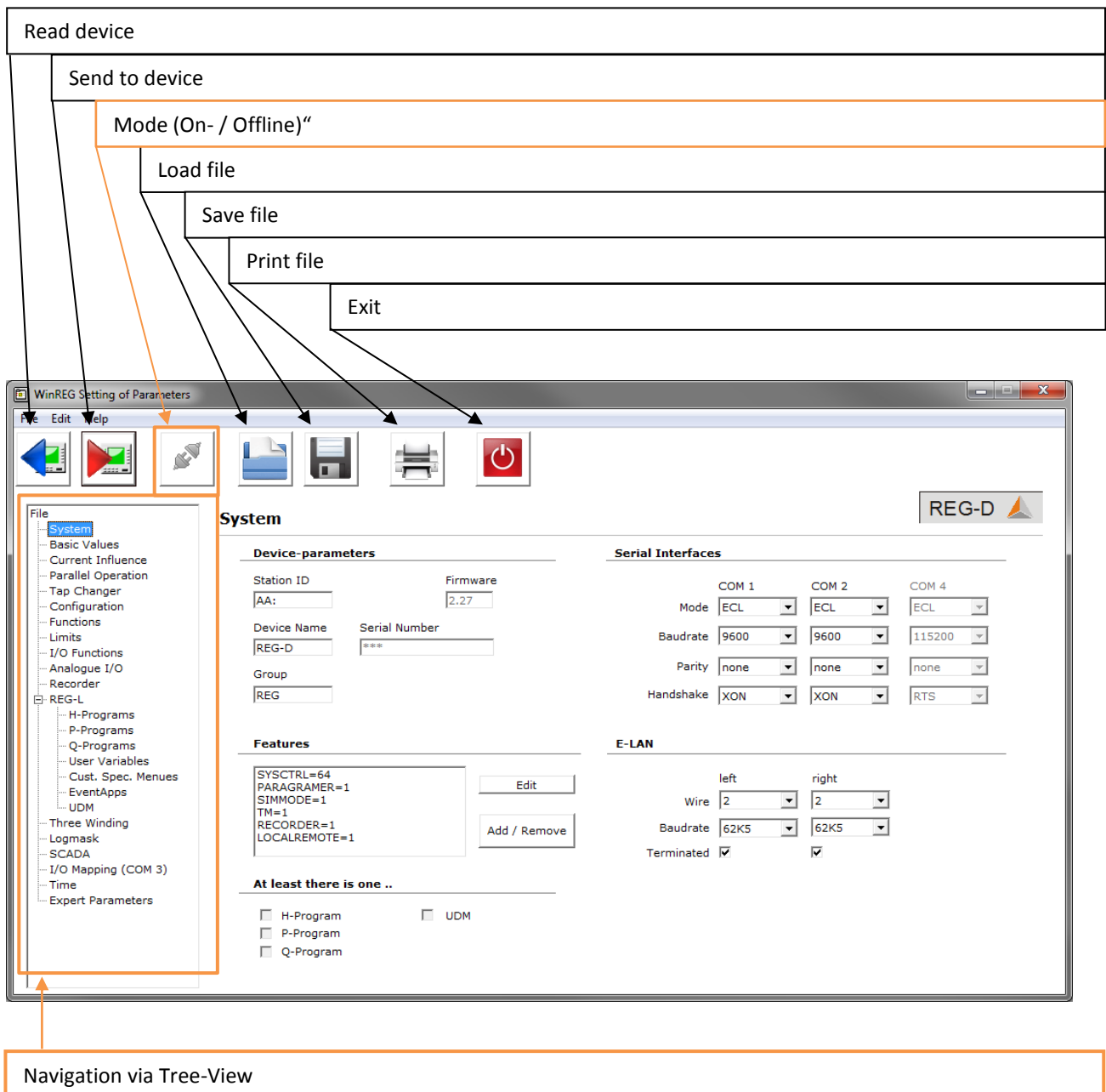
REGPara:

+ Adjusted design for REGPara.

REGPara has now a white background design. Navigation is only possible in the tree view, the tabulator menu is not available any more. This straight forward arrangement makes the selection of parameter groups and the separate settings more easily.

+ Additional quick access function „Mode (On- / Offline)“

The new arranged quick access function “Mode (On- / Offline)“ makes parameter differences between the connected device and the REGPara as a real timer comparison visible. By means of this function “online mode” lists like group members, input functions and binary inputs will be transferred to REGPara. The button starts and stops this function.



The screenshot shows the WinREG Setting of Parameters software interface. A menu structure is overlaid on the top left, listing the following items: Read device, Send to device, Mode (On- / Offline) (highlighted in orange), Load file, Save file, Print file, and Exit. Arrows point from these menu items to their corresponding icons in the software's menu bar. The software interface itself features a tree view on the left for navigation, a main panel with sections for System, Device-parameters, Serial Interfaces, Features, and E-LAN, and a toolbar with icons for navigation and file operations. A callout box at the bottom left points to the tree view with the text "Navigation via Tree-View".

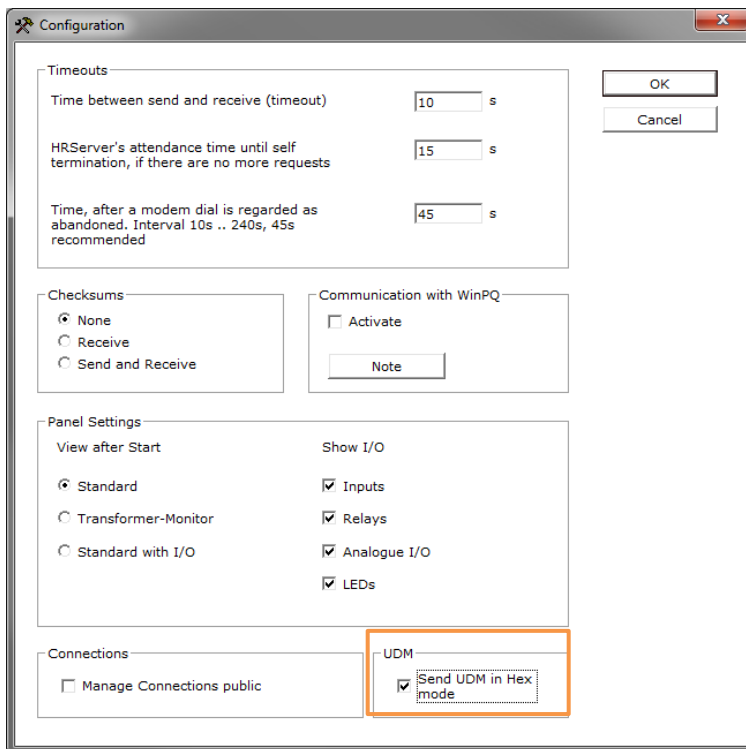
Export parameters as CSV file

Besides the already existing option to export parameters to a XLS file, it is now possible to export parameters also as a CSV file. Saved data file captures any kind of parameter values. Concerned here individual settings and additional default, maximal and minimal parameters will be recorded. An advanced function in the menu feature "Data\Import" offers the possibility to import changed CSV files into the parameter tool as well.

+ Reading and sending background programs and UDMs to devices via REGPara

With the new WinREG software, in addition to background programs and customer-specific menus, UDM files of the devices with feature S2 can now be read out and sent back to a device by REGPara.

In addition, the WinREG now offers the possibility to select existing background program and / or UDM files to be sent when sending the parameters. It is also possible to send a UDM file in hex mode (for example Chinese character sets and language settings) after set up in WinREG configuration.



+ Additional features and update of parameters for the latest REGSys™-firmware version 2.27 and 3.27

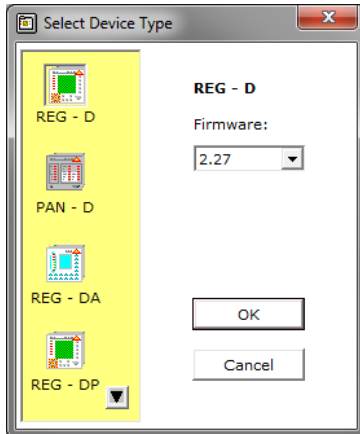
- System: New setting serial COM port 4
- Parallel Op.: ParaGramer-Activation and group list up to 15 parallel transformer;
Maximal permissible difference of Taps in parallel operation „dl*sin(phi)“, „d*cos(phi)“ and „dl*sin(phi)[S]“;
Extended Master/Follower-settings for naming of operation mode;
Delay time of parallel error and multi-master in operation mode MSI and MSI2;
Extension of ParaGramer-Settings (individual letters in in ParaGramer-Screen, Multiple Master, Extension for feature Crosslink
- Configuration: Delay time for Hand-Delay
Time delay for E-LAN Error
Limit for I_N „tap operation under load“
Actual Value Correction for voltage and current
- Function: Rolling-Screens after time delay
Time of Rolling screens
- Limits: Extension of values range with feature „PQCtrl“
Limit reference
Hysteresis
Changes for speed switching
- REG-L Reading and sending of background programs and UDM
- Three-Winding Relocated menu for parametrizing regulators with hardware feature „M2“ bzw. „M9“
- Logmask Extension of logmask registers
- SCADA Additional SCADA types
- Time Relocated menu for parametrizing time and time zone
- Expert Param. Additional menu for parametrizing „Hunting“, „Scaling factor“, „Advanced system and acknowledge settings“, „Advanced system settings and indication acknowledge“ „P-Limit for regulation (for feature EnBW)“, „Measurement channel assignment“, „DC measurement U/I“, „Scaling factor“, „Offset“

+ Additional features and update of parameters for the latest REG-DP(A)-firmware version 2.6.03

- System 1 RAM size
Manufacture date
CPU-Version
Resolution of time parameters (1h to 1/4h)
- Regulation 2 Additional values for U_{max} (U_{max} Hysteresis, U_{max} end-threshold, U_{max} end-Hysteresis, U_{max} end-Priority, Une Error-threshold, Une Error-Hysteresis)
- I/O-Functions New binary outputs 84: Abg_ U_{max_end} , 85: Abg_ v_invers

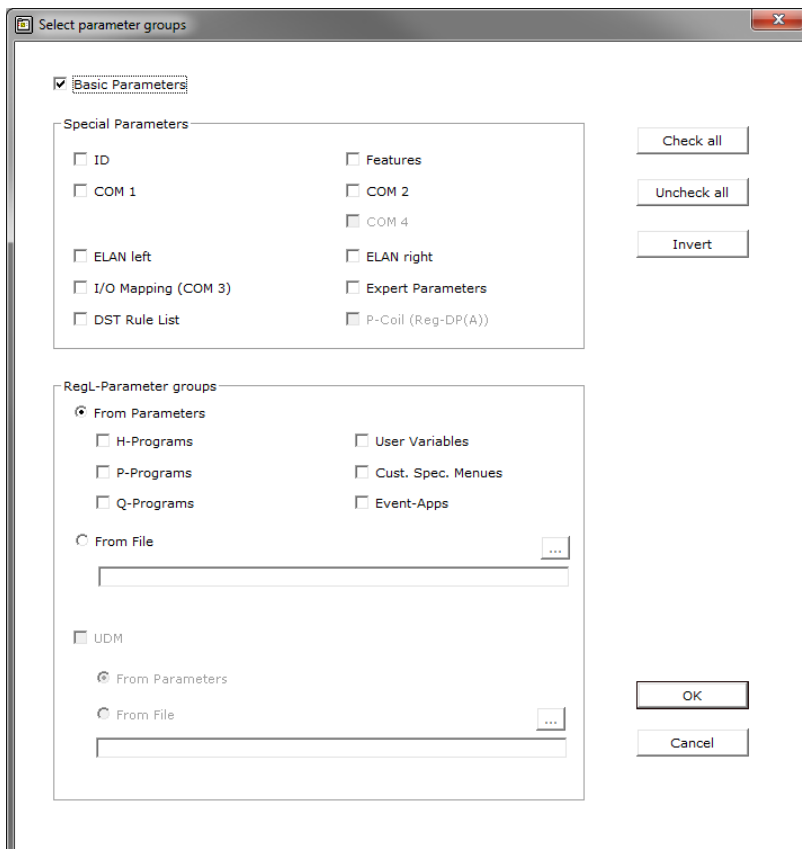
+ Version matrix of different firmware versions and fading unused parameters

The REGPara contains a version matrix of the different parameters from firmware versions 1.99 to 3.27 of the voltage regulator. An automatic query of possible parameters in the respective firmware, additionally depending on firmware settings, is performed. Those parameters which are not available in the selected firmware are faded and cannot be changed and sent to a device.



+ Central control by sending the parameters

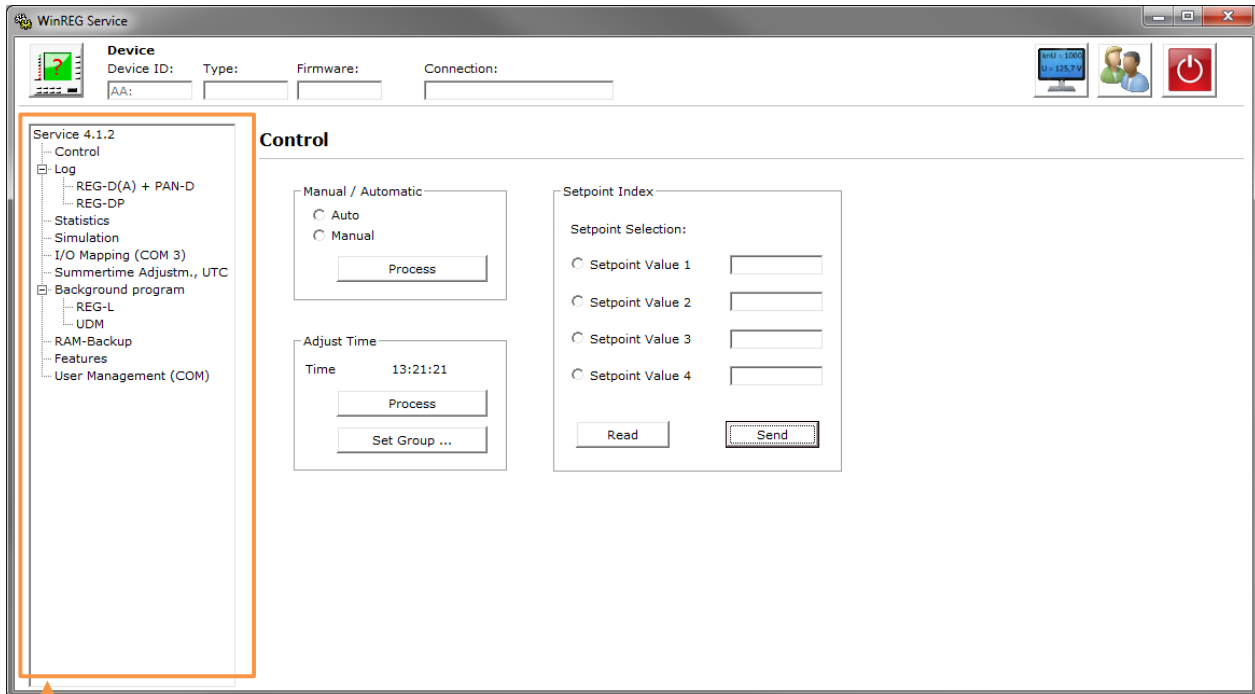
Individual changed parameters previously had to be sent separately in REGPara. The transmission is now controlled centrally after the respective device has been selected, in which the corresponding parameters have to be changed.



Service:

+ Adapted design for REGService without tabs (navigation only via tree view)

The design of the background appears in white just like REGPara surface. The menu navigation is also carried out only with the navigation via the tree view, the additional tabs are omitted.



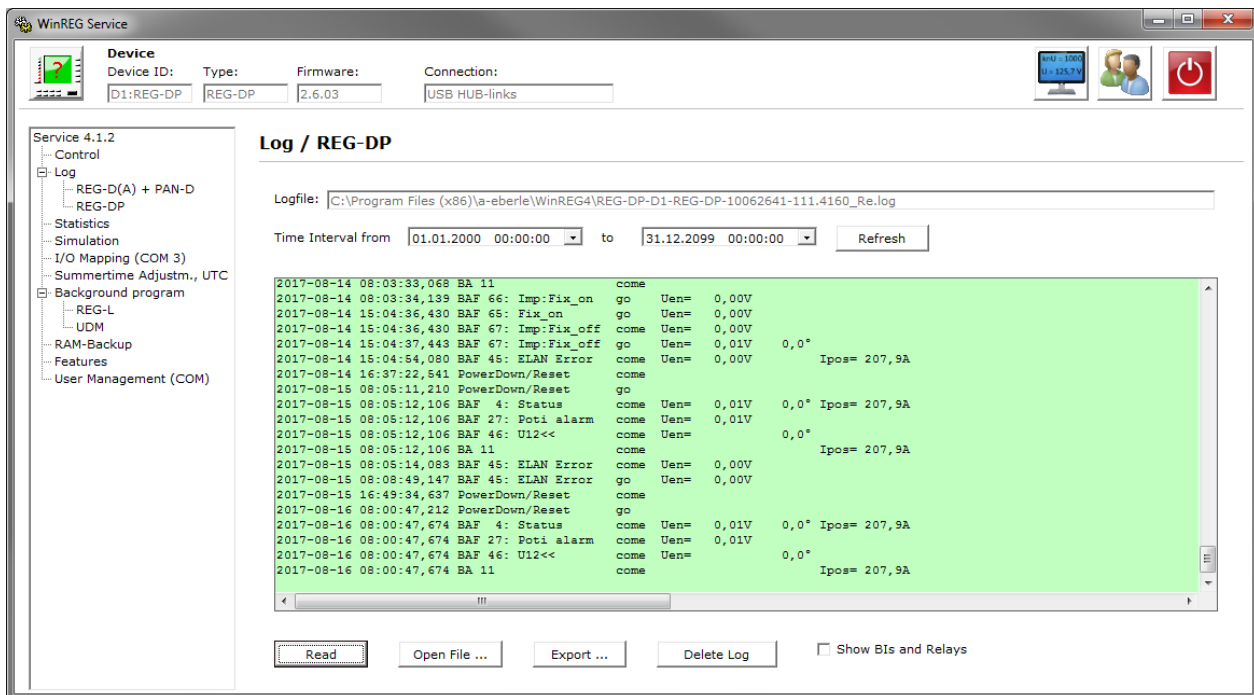
Navigation via Tree-View

+ Remote menu "Control"

An additional menu item "Control" has been created for switching the manual / auto mode, time setting and for adjustment of set point indexes.

+ Read and display logbook of REG-DP (A)

In addition to the logbook of the voltage regulator REG-D (A), the logbook for the Petersen coil regulator REG-DP (A) is now also available.



WinREG Service

Device
 Device ID: D1:REG-DP | Type: REG-DP | Firmware: 2.6.03 | Connection: USB HUB-links

Log / REG-DP

Logfile: C:\Program Files (x86)\a-eberle\WinREG4\REG-DP-D1-REG-DP-10062641-111.4160_Re.log

Time Interval from 01.01.2000 00:00:00 to 31.12.2099 00:00:00 [Refresh]

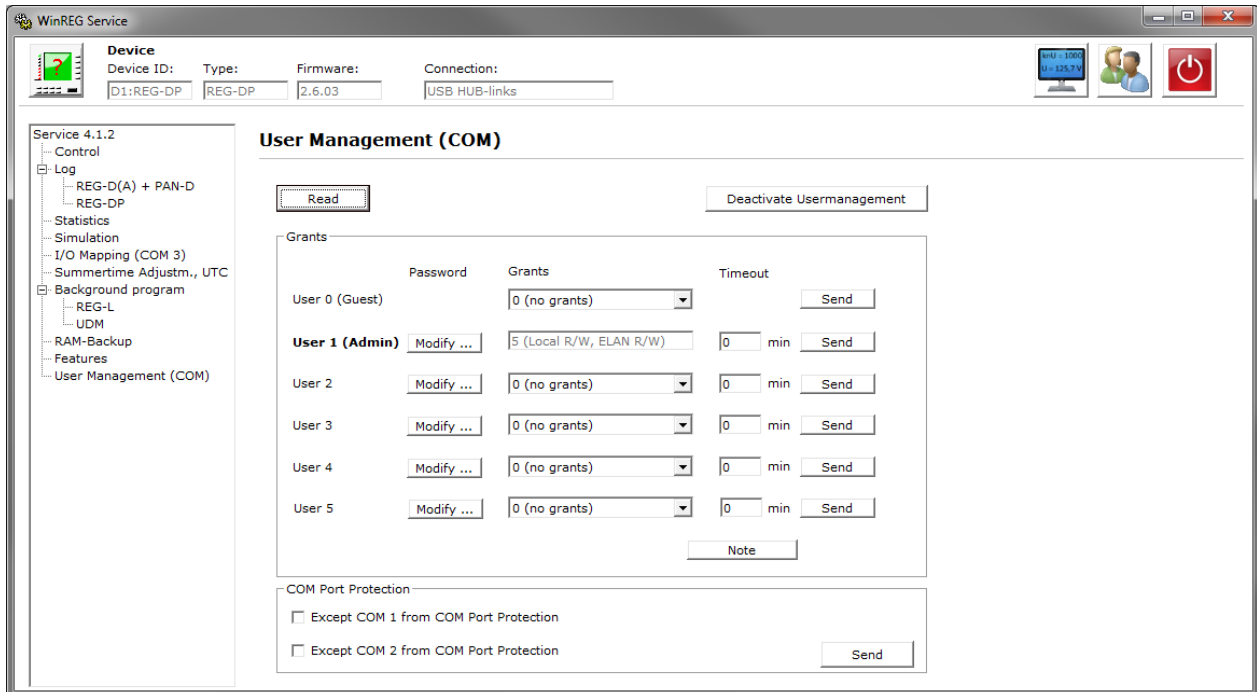
2017-08-14	08:03:33,068	BA 11	come			
2017-08-14	08:03:34,139	BAF 66: Imp:Fix_on	go	Uen=	0,00V	
2017-08-14	15:04:36,430	BAF 65: Fix_on	go	Uen=	0,00V	
2017-08-14	15:04:36,430	BAF 67: Imp:Fix_off	come	Uen=	0,00V	
2017-08-14	15:04:37,443	BAF 67: Imp:Fix_off	go	Uen=	0,01V	0,0°
2017-08-14	15:04:54,080	BAF 45: ELAN Error	come	Uen=	0,00V	Ipos= 207,9A
2017-08-14	16:37:22,541	PowerDown/Reset	come			
2017-08-15	08:05:11,210	PowerDown/Reset	go			
2017-08-15	08:05:12,106	BAF 4: Status	come	Uen=	0,01V	0,0° Ipos= 207,9A
2017-08-15	08:05:12,106	BAF 27: Poti alarm	come	Uen=	0,01V	
2017-08-15	08:05:12,106	BAF 46: U12<<	come	Uen=		0,0°
2017-08-15	08:05:12,106	BA 11	come			Ipos= 207,9A
2017-08-15	08:05:14,083	BAF 45: ELAN Error	come	Uen=	0,00V	
2017-08-15	08:08:48,147	BAF 45: ELAN Error	go	Uen=	0,00V	
2017-08-15	16:49:34,637	PowerDown/Reset	come			
2017-08-16	08:00:47,212	PowerDown/Reset	go			
2017-08-16	08:00:47,674	BAF 4: Status	come	Uen=	0,01V	0,0° Ipos= 207,9A
2017-08-16	08:00:47,674	BAF 27: Poti alarm	come	Uen=	0,01V	
2017-08-16	08:00:47,674	BAF 46: U12<<	come	Uen=		0,0°
2017-08-16	08:00:47,674	BA 11	come			Ipos= 207,9A

[Read] [Open File ...] [Export ...] [Delete Log] Show BIs and Relays

Service / Login:

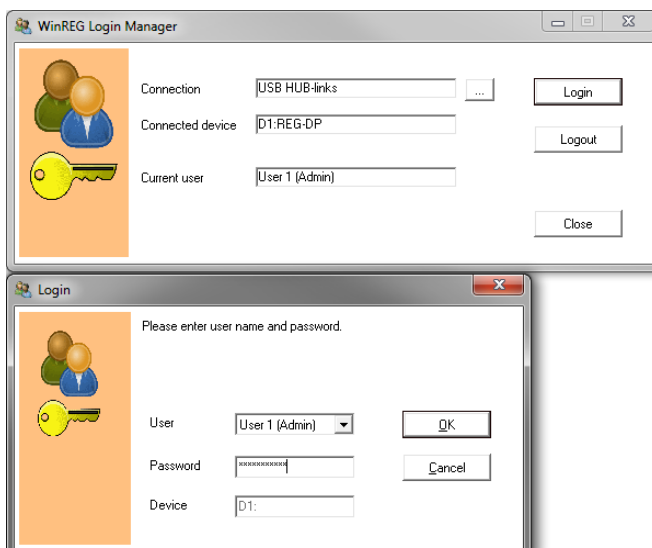
+ User management for serial interfaces

In the course of data security, the new WinREG software can be used to manage regulators serial interfaces for five different users. In this case, a password-protected access with individual authorizations can be set up individually for several users.



+ Login manager (easy access to devices whose serial interfaces are password-protected)

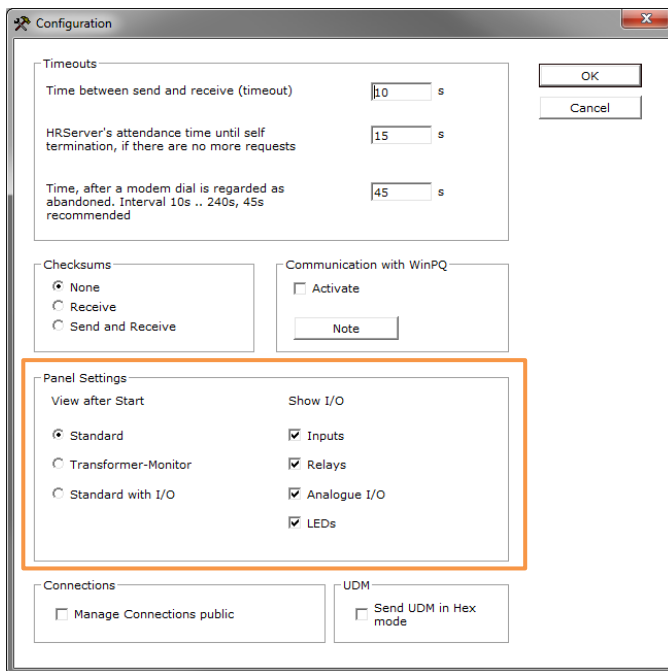
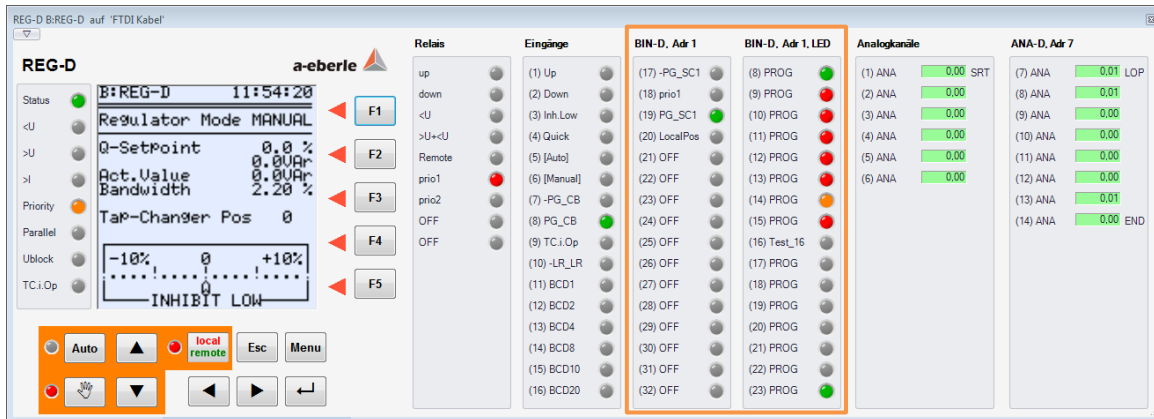
With the help of the login manager, created users of the serial interface can log on to the device. After login successfully, the usual parameter changes can be carried out, depending on the user rights set up.



Panel:

+ View of inputs, outputs and LEDs

In the extended view of the panel with additional inputs and outputs, only mapped channels will be displayed in additional COM3 boxes. Furthermore, added LEDs are displayed in several columns and can be selected by default in standard settings.



+ Improved stability

For a stable connection between a plugged controller and the screen via WinREG panel, improvements were made in the server and various timers.

Known issues and limitations

+ nor errors and comments