



Parameterization guide

REG-P Loader

Model PQI-DA



Note:



Model PQI-DA

We take care of it.

Please note that these user manual may not always contain the latest information concerning the device. If, for example, you have changed the firmware of the device to a higher version via the Internet, this description will no longer be completely accurate.

In this case, contact us directly or use the latest version of the operating instructions available from our Internet site (www.a-eberle.de).

A. Eberle GmbH & Co KG

Frankenstraße 160

D-90461 Nuremberg

Telephone: 0911 / 62 81 08 0

Fax: 0911 / 62 81 08 99

E-Mail: info@a-eberle.de

Internet: www.a-eberle.de

A. Eberle GmbH & Co KG does not accept any liability for damage or losses of any kind arising from printing errors or changes in this manual.

Furthermore, **A. Eberle GmbH & Co KG** will not accept any liability for loss or damage of any kind resulting from faulty equipment or devices that have been modified by the user.

Copyright 2021 A. Eberle GmbH & Co KG

Subject to change without prior notice.

Table of contents

1.	Commissioning PQI-DA.....	4
2.	Parameterization of the REG-COM server	4
2.1	MAC address	4
2.2	Selection of the network interface	5
2.3	Entering the MAC address	6
2.4	Parameterization of the REG-COM server	6

1. Commissioning PQI-DA

Before the COM server can be parameterized, the operating voltage must be applied to the PQI-DA.



When applying the operating voltage, the technical data of the PQI-DA must be observed. Applying an operating voltage outside the characteristic data can lead to the destruction of the PQI-DA. Please refer to the corresponding operating instructions.

If anything is unclear, please contact the PQ support team.

2. Parameterization of the REG-COM server

After the PQI-DA has been commissioned, the REG-COM server can be parameterized. For this purpose, it is necessary that the REG-P Loader software is installed.



Please make sure that the current version of the REG-P Loader is used. The current version can be found at the company website of A.Eberle.

2.1 MAC address

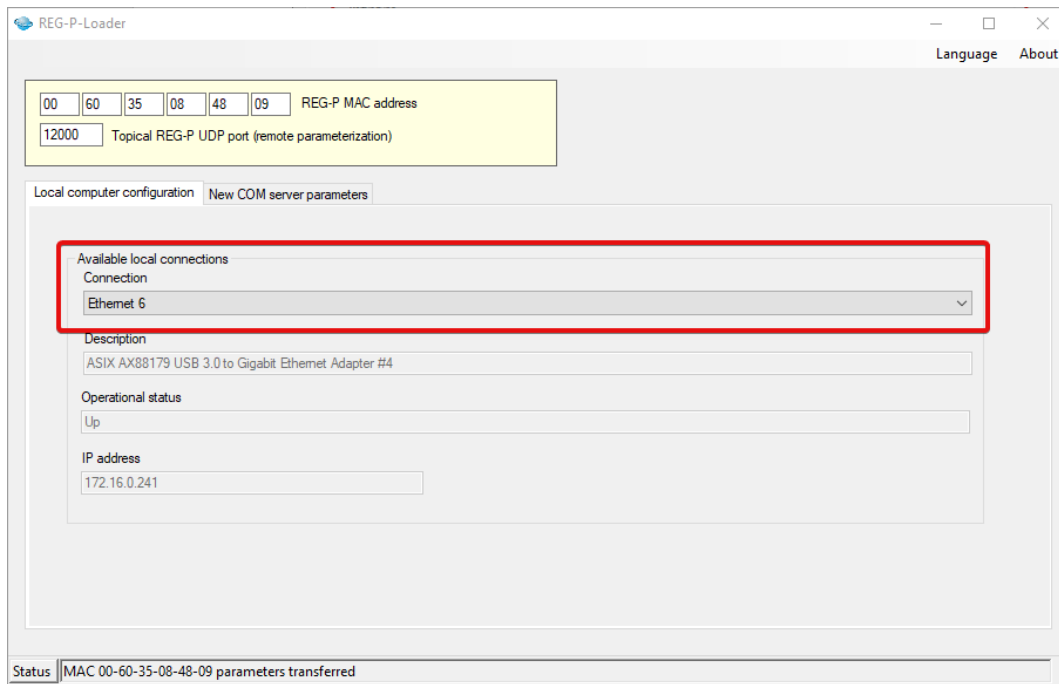
The MAC address of the PQI-DA is required for parameterization of the REG-COM server. The MAC address can be determined in the following ways::

- Front side PQI-DA
- Nameplate PQI-DA
- Test report PQI-DA

2.2 Selection of the network interface

A network connection between the parameterization PC and the PQI-DA is required for parameterization of the PQI-DA. If the parameterization PC has several network interfaces, the correct interface must be selected in the REG-P Loader. To do this, perform the following steps:

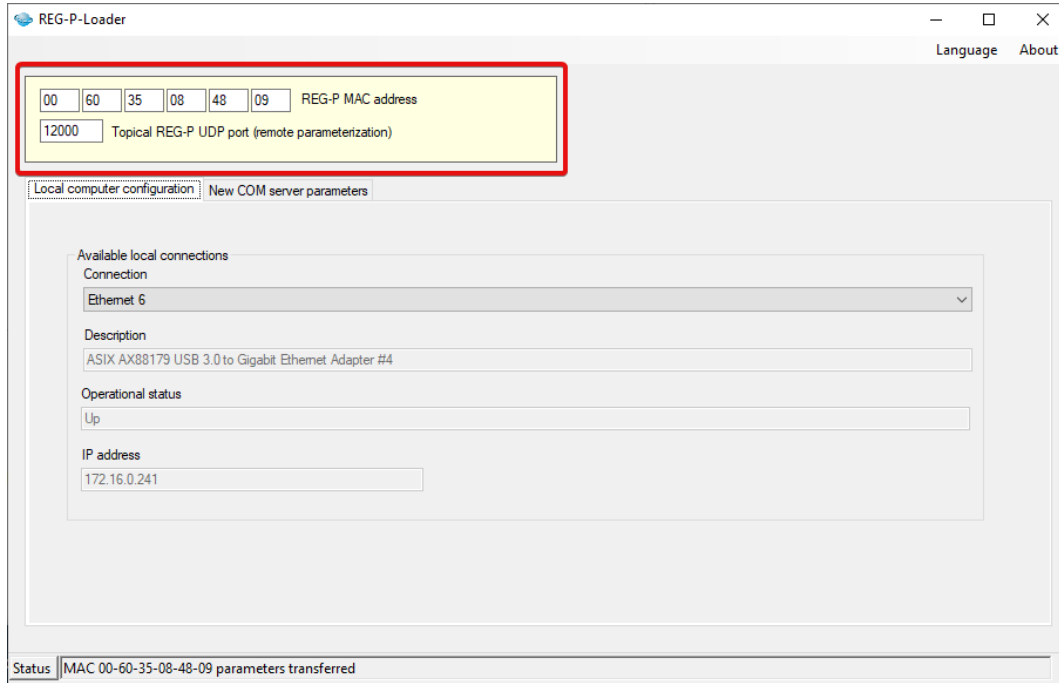
- Selection of the correct connection (see following figure):



The status of the network connection must be set to "Up" in order to carry out parameterization.

2.3 Entering the MAC address

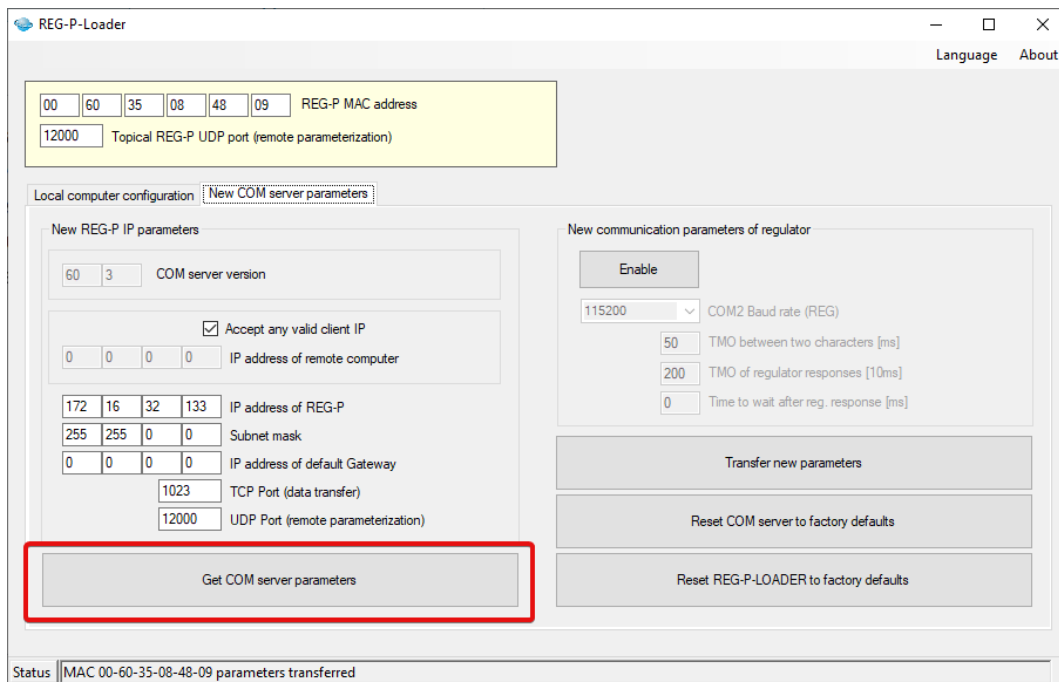
Please enter the MAC address in the input field provided (see figure below):



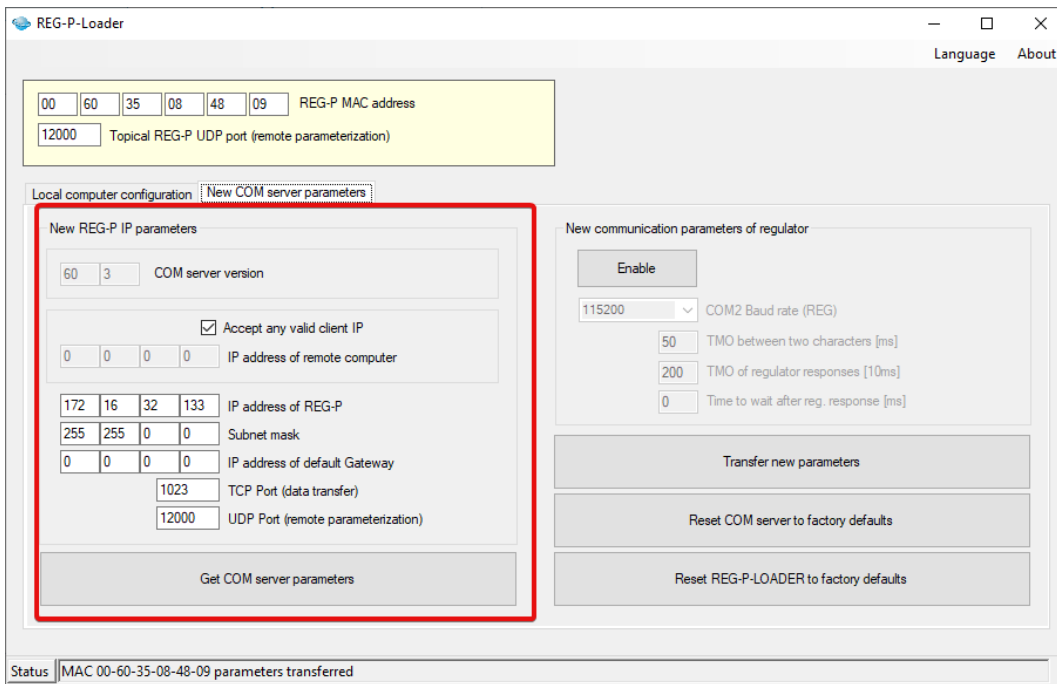
2.4 Parameterization of the REG-COM server

To parameterize the REG-COMS server, switch to the *New COM server parameters* menu.

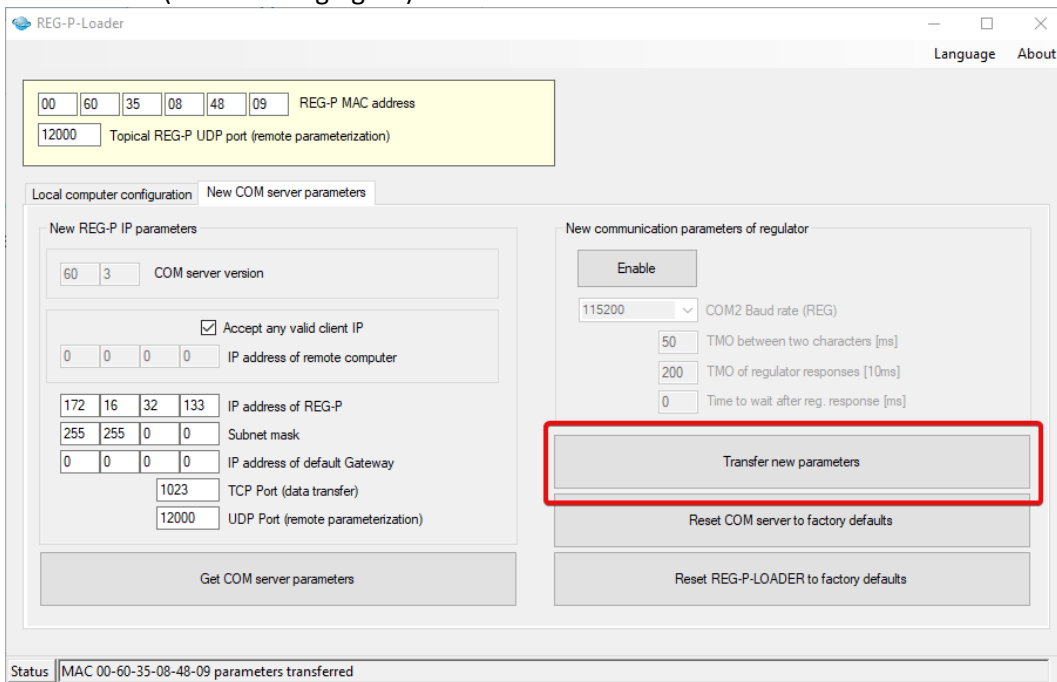
In this menu the COM server parameters are to be read out first. To do this, press the button *Get COM Server parameters* (see following figure):



After reading in the parameterization, the REG-COM server can be parameterized (see following figure):



After successful parameterization, the parameter set can be transferred to the PQI-DA via the *Transfer new parameters* button (see following figure):



After the parameterization has been successfully transmitted, the PQI-DA restarts. Communication with the device can then be established using the settings made.

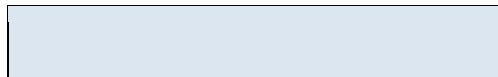


A. Eberle GmbH & Co KG

Frankenstraße 160
D-90461 Nuremberg
Germany

Tel.: +49 (0) 911 / 62 81 08-0
Fax: +49 (0) 911 / 62 81 08 96
E-Mail: info@a-eberle.de

<http://www.a-eberle.de>



Version: 3/25/2021 10:02 AM